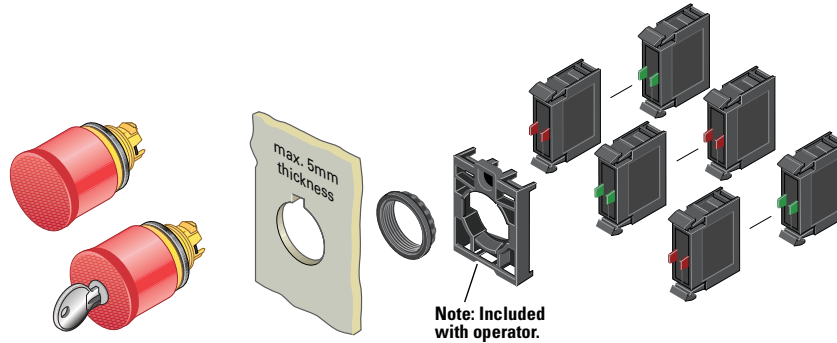





#### Non-Illuminated Emergency Stops



#### Components

##### Operators Only <sup>①</sup>

	Type	Color	Actuator Size	Catalog Number
<b>M22-PV</b> 	Push-pull	Red	35 mm	<b>M22-PV</b>
		Black	35 mm	<b>M22S-PV</b>
<b>M22S-PVT</b> 	Twist-to-release	Red	35 mm	<b>M22-PVT</b>
			45 mm	<b>M22-PVT45P</b>
			60 mm	<b>M22-PVT60P</b>
		Black	<b>M22S-PVT</b>	
<b>M22S-PVT_</b> 	Key release <sup>②</sup>	Red	35 mm	<b>M22-PVS <sup>③</sup></b>
				<b>M22-PVS-MS2</b>
				<b>M22-PVS-MS3</b>
				<b>M22-PVS-MS4</b>
				<b>M22-PVS-MS5</b>
				<b>M22-PVS-MS6</b>
				<b>M22-PVS-MS7</b>
				<b>M22-PVS-MS8</b>
			45 mm	<b>M22-PVS45P</b>
				<b>M22-PVS45P-MS2</b>
				<b>M22-PVS45P-MS3</b>
				<b>M22-PVS45P-MS4</b>
				<b>M22-PVS45P-MS5</b>
				<b>M22-PVS45P-MS6</b>
				<b>M22-PVS45P-MS7</b>
				<b>M22-PVS45P-MS8</b>
			60 mm	<b>M22-PVS45P-RS</b>
				<b>M22-PVS60P</b>
				<b>M22-PVS60P-MS2</b>
				<b>M22-PVS60P-MS3</b>
60 mm	<b>M22-PVS60P-MS4</b>			
	<b>M22-PVS60P-MS5</b>			
	<b>M22-PVS60P-MS6</b>			
	<b>M22-PVS60P-MS7</b>			
	<b>M22-PVS60P-MS8</b>			
	<b>M22-PVS60P-RS</b>			
	<b>M22-PVT45P-MPI</b>			
	<b>M22-PVT60P-MPI</b>			

##### M22-K10



##### Contact Blocks <sup>④</sup>

Terminal Type	Mounting Location <sup>⑤</sup>	Contact Configuration <sup>⑥</sup>	Catalog Number		
Screw	Front	NO	<b>M22-K10</b>		
		NO, early-make	<b>M22-K10P</b>		
		NC	<b>M22-K01</b>		
		NC, late-break	<b>M22-K01D</b>		
		SMCB, NC	<b>M22-K01SMC10</b>		
	Base	SMCB, 2NC	<b>M22-K02SMC10</b>		
		SMCB, NC	<b>M22-KC01SMC10</b>		
		SMCB, 2NC	<b>M22-KC02SMC10</b>		
		Spring-cage	Front	NO	<b>M22-CK10</b>
				NC	<b>M22-CK01</b>
NC, late-break	<b>M22-CK01D</b>				
2NO	<b>M22-CK20</b>				
2NC	<b>M22-CK02</b>				
		NO-NC	<b>M22-CK11</b>		


##### M22-ES-MS1



##### Extra Keys <sup>⑦</sup>

For Key Code	Catalog Number
MS1	<b>M22-ES-MS1</b>
MS2	<b>M22-ES-MS2</b>
MS3	<b>M22-ES-MS3</b>
MS4	<b>M22-ES-MS4</b>
MS5	<b>M22-ES-MS5</b>
MS6	<b>M22-ES-MS6</b>
MS7	<b>M22-ES-MS7</b>
MS8	<b>M22-ES-MS8</b>

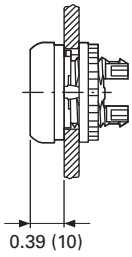
##### Notes

- <sup>①</sup> Includes contact block mounting adapter.
- <sup>②</sup> Key included. For identical locks and keys, use the same key code. One key is included with actuator; additional keys are available as accessories.
- <sup>③</sup> Includes Key Code MS1.
- <sup>④</sup> For complete listing of available contact blocks, see Accessories, **Pages V7-T1-96 to V7-T1-101**.
- <sup>⑤</sup> Self-monitoring contact blocks (SMCB type) cannot be used with illuminated emergency stops.
- <sup>⑥</sup> All NC contact blocks are positively driven contact. 
- <sup>⑦</sup> For use with key release operators only. One key included with operator.

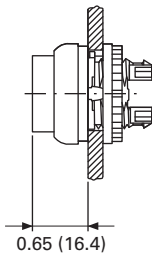
Approximate Dimensions in Inches (mm)

### Illuminated Pushbuttons

M22...-DL\_

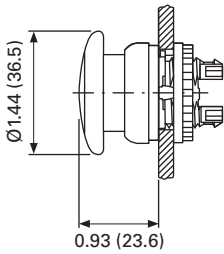


M22...-DLH\_



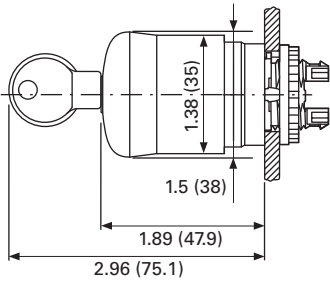
### Mushroom Head Pushbutton

M22...-DP\_



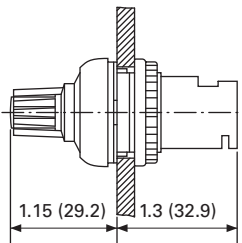
### Emergency-Stop Operators

M22-PV\_  
M22S-PV\_  
M22-PVL\_  
M22-PVS\_



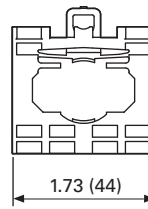
### Potentiometer

M22(S)-R\_

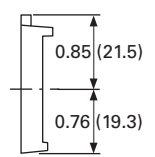
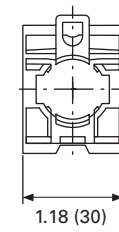


### Contact Block Mounting Adapter

M22-A\_

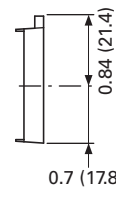
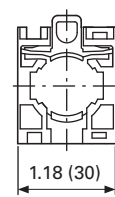


M22S-A...

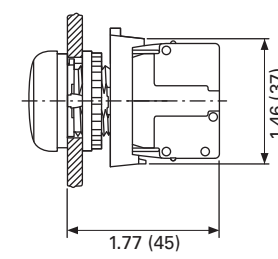
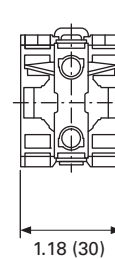


### Front Mounted Centering Adapter

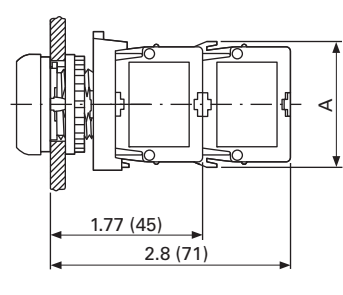
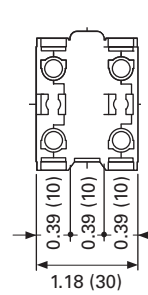
M22-ZA



### Front Mounted Indicating Light



### Pushbutton, Complete Devices



	1 x M22-K_	2 x M22-K_	1 x M22-CK_	2 x M22-CK_
A	1.46 (37.2)	1.46 (37.2)	1.54 (39.0)	1.54 (39.0)